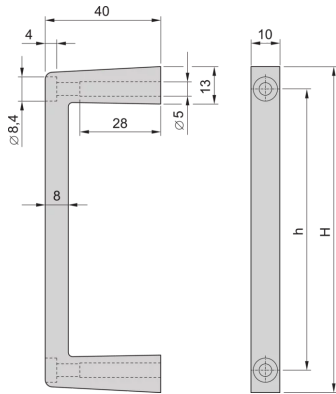


20860-257 MULTIPACPRO FRONT HANDLE, ONE-PIECE, WIDTH 10 MM, 2 U



KEY FEATURES

Load-carrying capacity 30 kg/pair

Assembly on the front panel

Can be used for the aluminium or sheet metal versions

PRODUCT ATTRIBUTES

Product Type: Handle

Works With: Chassis; Front Panels

Handle Type: Straight

Rack Height: 2 U

Width: 10 mm

Material: Aluminum

Color: Silver

Package Quantity: 2

ADDITIONAL PRODUCT DETAILS

The front handles can be mounted and provide an easier to mount assembly. The handles can be assembled from the front side.



North America

All locations
+1.763.422.2661
Chat with us:
schroff.nvent.com

Europe

Straubenhardt, Germany
+49.7082.794.0
Betschdorf, France
+33.3.88.90.64.90
Warsaw, Poland
+48.22.209.98.35
Assago, Italy
+39.02.932.7141
Chat with us:
schroff.nvent.com

Asia

Shanghai, China
+86.21.2412.6943
Qingdao, China
+86.532.8771.6101
Singapore
+65.6768.5800
Shin-Yokohama, Japan
+81.45.476.0271
Chat with us:
schroff.nvent.com

Middle East & India

Dubai, United Arab Emirates
+971.4.378.1700
Bangalore, India
+91.80.6715.2001
Istanbul, Turkey
+90.216.250.7374
Chat with us:
schroff.nvent.com



Our powerful portfolio of brands:
nVent.com **CADDY ERICO HOFFMAN RAYCHEM SCHROFF TRACER**