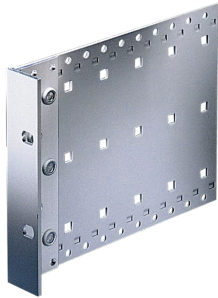


24566-427 EUROPACPRO SIDE PANEL FOR STAINLESS STEEL GASKET, TYPE H, HEAVY, 6 U, 235 MM



Combinations of horizontal rails and side panels

⊕ = can be combined, ⊖ = combination not recommended

Horizontal rail	Side panel	Light 1.1	Flexibar 2	Heavy 2.0	Biggest 2
Horizontal rail	Side panel	+	+	+	+
Horizontal rail	Side panel	+	+	+	+
Horizontal rail	Side panel	+	+	-	-
Horizontal rail	Side panel	+	+	-	-

Side panel

KEY FEATURES

For high mechanical demands, 19" bracket, tox-cold welded, Al, 2-mm, clear passivated, front anodized

Versions for EMC sealing (stainless steel or textile)

PRODUCT ATTRIBUTES

Product Type: Side Panel

Product Family: EuropacPRO

Type: Type H

Rack Height: 6 U

Package Quantity: 2

Depth: 235 mm

ADDITIONAL PRODUCT DETAILS

Side Panel, Type H, without handle holes, tox welded to the 19" bracket for stainless steel gasket.

Side panel and 19" bracket are tox-cold welded together. toxen = Clinching technique, without add aids. This takes place with special tools and high pressure.

9 U version available on request.



North America

All locations
+1.763.422.2661
Chat with us:
schroff.nvent.com

Europe

Straubenhardt, Germany
+49.7082.794.0
Betschdorf, France
+33.3.88.90.64.90
Warsaw, Poland
+48.22.209.98.35
Assago, Italy
+39.02.932.7141
Chat with us:
schroff.nvent.com

Asia

Shanghai, China
+86.21.2412.6943
Qingdao, China
+86.532.8771.6101
Singapore
+65.6768.5800
Shin-Yokohama, Japan
+81.45.476.0271
Chat with us:
schroff.nvent.com

Middle East & India

Dubai, United Arab Emirates
+971.4.378.1700
Bangalore, India
+91.80.6715.2001
Istanbul, Turkey
+90.216.250.7374
Chat with us:
schroff.nvent.com



Our powerful portfolio of brands:
nVent.com **CADDY ERICO HOFFMAN RAYCHEM SCHROFF TRACER**