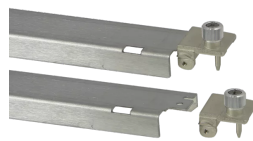
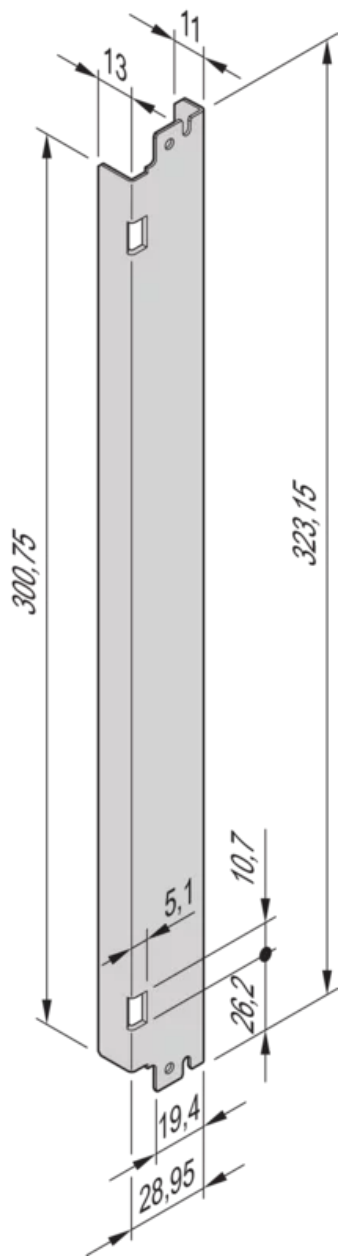


31596-899 ADVANCEDTCA FRONT PANEL, REINFORCED WITH SPRING LOADING FOR IEA PLUNGER HANDLE, DIE-CAST-END PIECE, 8 U, 6 HP, 1 MM, AL EXTRUSION



KEY FEATURES

Configuration: Front panel with IEA handle (with/without spring loading)

Al extrusion; for mesh EMC sealing

PRODUCT ATTRIBUTES

Accessory Type: Front panel

Material: Aluminum

Rack Height: 8 U

Rack Width: 6 HP

Height: 323.15 mm

Width: 29 mm

Depth: 1 mm

Rear Finish: Raw

Front Finish: Raw

Package Quantity: 1

ADDITIONAL PRODUCT DETAILS

AdvancedTCA front panel for spring-loaded IEA handle with die-cast-end piece.

CERTIFICATIONS



North America

All locations

+1.763.422.2661

Chat with us:

schroff.nvent.com

Europe

Straubenhardt, Germany

+49.7082.794.0

Betschdorf, France

+33.3.88.90.64.90

Warsaw, Poland

+48.22.209.98.35

Assago, Italy

+39.02.932.7141

Chat with us:

schroff.nvent.com

Asia

Shanghai, China

+86.21.2412.6943

Qingdao, China

+86.532.8771.6101

Singapore

+65.6768.5800

Shin-Yokohama, Japan

+81.45.476.0271

Chat with us:

schroff.nvent.com

Middle East & India

Dubai, United Arab Emirates

+971.4.378.1700

Bangalore, India

+91.80.6715.2001

Istanbul, Turkey

+90.216.250.7374

Chat with us:

schroff.nvent.com



Our powerful portfolio of brands:
nVent.com **CADDY ERICO HOFFMAN RAYCHEM SCHROFF TRACER**

© 2023 nVent. All nVent marks and logos are owned or licensed by nVent Services GmbH or its affiliates. All other trademarks are the property of their respective owners.

nVent reserves the right to change specifications without notice.