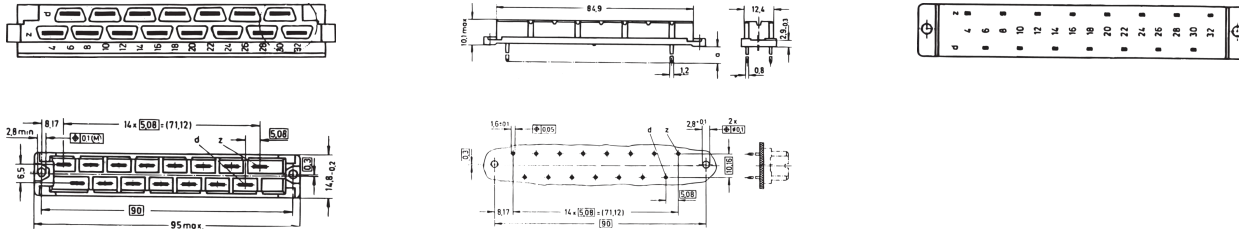


## 69001-980 CONNECTOR TYPE H, EN 60603, DIN 41612, FEMALE, 15 CONTACTS, PIN LENGTH 10.0 MM



### KEY FEATURES

Requirement class 2 as per EN 60603 (DIN 41642)

Separate Coding

Coding on the connector

### PRODUCT ATTRIBUTES

Product Type: Connector

Type: Female Connectors

Works With: Front Panels

Number of Contacts: 15

Contact Material: Silver Plated

Connector Pitch: 5.08 mm

Min Creepage Distance, Contact-Contact: 8 mm

Min Air Gap, Contact-Contact: 4.5 mm

Max Current @ 20°C: 6 A

Max Contact Resistance: 8 mΩ

Max Insertion and Withdrawal Force: 90 N

Test Voltage (Ueff), Contact-Contact: 1.55 kV

Test Voltage (Ueff), Contact-Earth: 2.5 kV

Row Assignment: Z; D

## ADDITIONAL PRODUCT DETAILS

---

Male / Female DIN connector form H. Requirement class 2 as per EN 60603 (DIN 41642).

## CERTIFICATIONS

---



### North America

All locations  
+1.763.422.2661  
Chat with us:  
[schroff.nvent.com](https://schroff.nvent.com)

### Europe

Straubenhardt, Germany  
+49.7082.794.0  
Betschdorf, France  
+33.3.88.90.64.90  
Warsaw, Poland  
+48.22.209.98.35  
Assago, Italy  
+39.02.932.7141  
Chat with us:  
[schroff.nvent.com](https://schroff.nvent.com)

### Asia

Shanghai, China  
+86.21.2412.6943  
Qingdao, China  
+86.532.8771.6101  
Singapore  
+65.6768.5800  
Shin-Yokohama, Japan  
+81.45.476.0271  
Chat with us:  
[schroff.nvent.com](https://schroff.nvent.com)

### Middle East & India

Dubai, United Arab Emirates  
+971.4.378.1700  
Bangalore, India  
+91.80.6715.2001  
Istanbul, Turkey  
+90.216.250.7374  
Chat with us:  
[schroff.nvent.com](https://schroff.nvent.com)



Our powerful portfolio of brands:  
[nVent.com](https://nVent.com) **CADDY ERICO HOFFMAN RAYCHEM SCHROFF TRACER**

© 2023 nVent. All nVent marks and logos are owned or licensed by nVent Services GmbH or its affiliates. All other trademarks are the property of their respective owners.

nVent reserves the right to change specifications without notice.