

Versatile, high-resolution desktop printers

TD4T Thermal Transfer Series

brother.co.nz



Thermal transfer and thermal direct. Wifi and BT options available.

Brother's range of TD4T professional label printers offer the ability to print high quality labels on demand, whatever the requirement. Printing labels up to 4 inches in width, and with thermal transfer and thermal direct print technology, they fit the requirements of a large range of vertical market applications.

TD4T professional desktop label printers



Seamless Integration

Brother's new high specification 4 inch desktop label printers bring you improved operational efficiency with easy to use, high speed and continuous label printing. Combined with seamless integration and modular design, print from virtually anywhere in the workplace. Supporting a variety of printer command languages including ZPL II allows you to integrate into existing legacy systems.



TD4420TN / TD4520TN / TD4650TNWB / TD4750TNWB

Professional label printing



BLOOD SAMPLE
BOTTLES

Labels are often required to display a considerable amount of important information. You need a printer that can put it all together efficiently, with consistent, high-quality results.

The TD4T Series of desktop label printers offer thermal transfer and direct thermal high speed printing, at up to 300 dpi resolution. Options include a peeler or automatic cutter, for producing continuous media to your required length on demand.

The software supports barcode printing, embellish font programming for highlighting specific words, and also allows you to import graphics and date formats for a truly personalised solution.



Printing Technology

Thermal Transfer

Crisp, durable printing is achieved through a process in which the ink is absorbed into the label, making it ideal for applications that require robust, harder-wearing labels.

Direct Thermal

Low-cost, high-volume labels can be created through this process, which uses a heat-sensitive coating and thermal print head, meaning traditional printing ribbons and ink are not required. Ideal for shorter term and less permanent labeling uses.

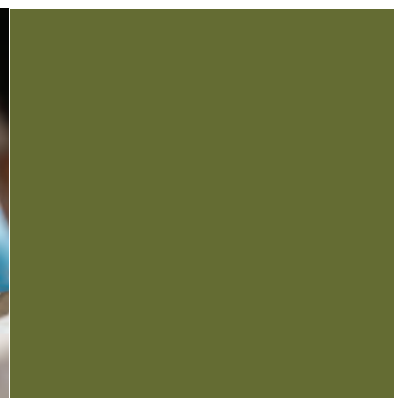
Healthcare, medical and laboratory



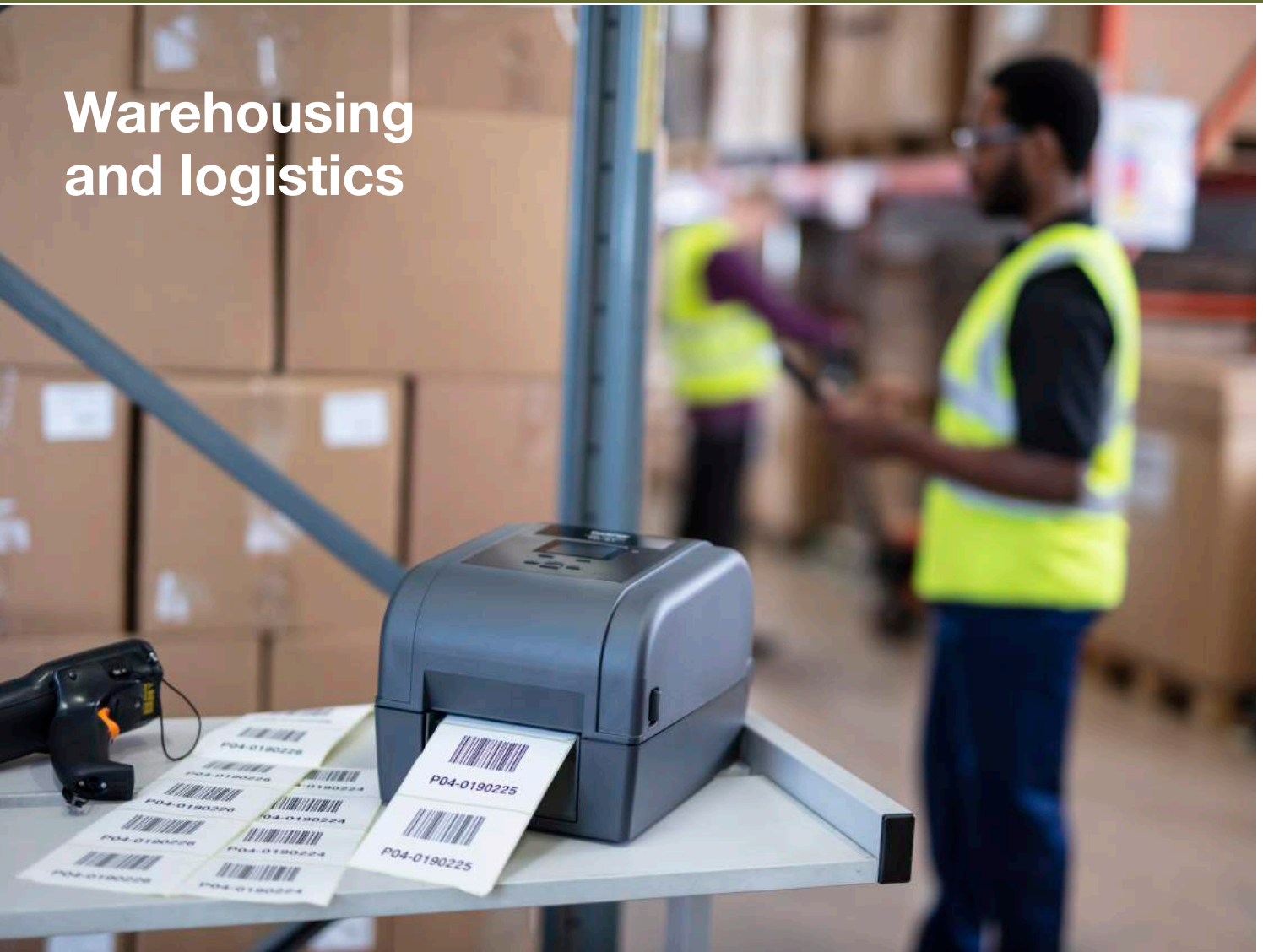
With the strict regulations on the tracking of patient specimens and other items within the healthcare industry, clear, high quality labelling is essential to maintain safety and traceability.

Applications include:

- Appointment cards
- Admission labels
- Specimen and pathology labels
- Blood bag labels
- Laboratory labels
- Microbiology labels
- Dosage/drug bag labels



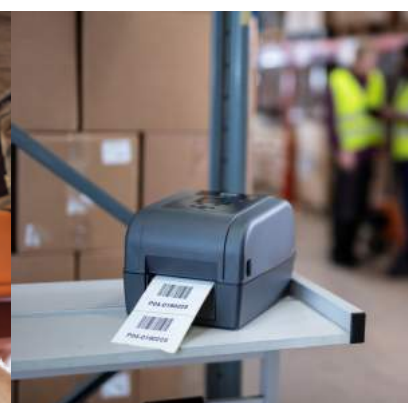
Warehousing and logistics



Efficient warehousing operation and worker productivity are critical to the success of many companies. With the most common sizes of shipping labels available and the ability to create custom size labels there are many uses for these models in the warehouse.

Applications include:

- Shipping labels
- Carton labels
- Location labels
- Pallet identification labels
- Quality control labels
- Compliance labels



Retail



Easy to read labels are essential for consumers to help make informed decisions prior to a potential purchase. The high print resolution and high quality labels used in this range ensure that every output printed looks professional, offering sharp text, logos and barcodes with a high contrast to ensure faultless scanning at the checkout.

Applications include:

- Pricing labels
- Barcode labels
- Pre-packaged food ingredients labels
- Nutrition information labels
- Shelf-edge labels
- Sale/mark-down/discount pricing labels



TD4T Range

brief summary



Printing

Print technology	Thermal Transfer & Direct Thermal			
Print speed	152.4mm/sec	127mm/sec	203.2mm/sec	152.4mm/sec
Resolution	203dpi	300dpi	203dpi	300dpi
Max print width	108mm	105.7mm	108mm	105.7mm
Min print length	Peeler: 25.4 mm Cutter: 25.4 mm Tear: 50 mm			
Max print length	25,400mm	11,430mm	25,400mm	11,430mm
Media sensor type	Gap (Transmissive)		Gap (Transmissive), Black Mark (Reflective)	
Media sensor location	Gap (Fixed), Reflective (Adjustable)			
Tear off release mode	Standard: Continuous, Tear off Optional: Peeler, Cutter			

Connectivity

USB	●	●	●	●
Serial	●	●	●	●
Wired LAN	●	●	●	●
USB Host Port	●	●	●	●
Bluetooth			●	●
Wireless LAN (WiFi)			●	●

General

Dimensions (mm)	204(w) x 280(d) x 164(h)	219(w) x 284(d) x 191(h)
Weight	2.5kg	3kg
Control panel	1 button 1 LED with 3 colours	1 LED with 3 colours
LCD		2.3" colour LCD
Operating system support	Windows 7/8/8.1/10, Windows Server 2008/2008R2/2012/2012R2/2016/2019 OS X 10.10.x,10.11.x macOS 10.12.x, 10.13.x, 10.14.x, 10.15.x Linux	Windows 7/8.1/10, Windows Server 2012/2012R2/2016/2019 OS X 10.11.x, macOS 10.12.x, 10.13.x, 10.14.x, 10.15.x Linux
Supported commands	FBPL-EZD (EPL, ZPL, ZPL II, DPL) FBPL-EZS (EPL, ZPL, ZPL II, SBPL)	

TD-4T Accessories

and consumable supplies

TD-4T Additional Options

PA-LP-003
TD-4T series only
Label Peeler

TD-4420TN
TD-4520TN



PA-CU-002
TD-4T series only
Full & Partial Cutter

TD-4420TN
TD-4520TN



PA-RH-001
TD-4T series only
External Roll Holder

TD-4420TN
TD-4520TN



TD-4T Consumables

Thermal Direct Labels (RD Rolls)	Size	Quantity	Colour	Item No
Continuous label roll	102mm x 44.4m	Continuous	White	RD-S01C2
Die cut label roll	102mm x 152mm	72 labels	White	RD-S02C1
Die cut label roll	102mm x 50mm	281 labels	White	RD-S03C1
Die cut label roll	51mm x 26mm	1564 labels	White	RD-S05C1
Die cut label roll	40mm x 25mm	2000 labels	White	RD-R40NZ25
Die cut label roll	55mm x 25mm	2000 labels	White	RD-R55NZ25

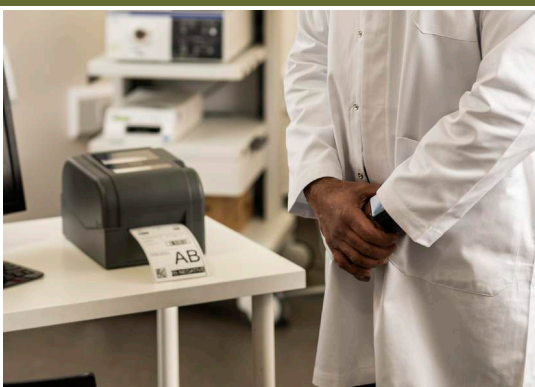
Thermal Transfer Ribbons (Ink Out)	Width	Length	Substrate compatibilities	Item No
Standard wax	110mm / 4.33 inch	300m	Coated/uncoated paper and tags, high gloss paper	BTT300SW
Premium wax	110mm / 4.33 inch	300m	Coated/uncoated paper and tags, high gloss paper, economy synthetics	BTT300PW
Standard wax/resin	110mm / 4.33 inch	300m	Coated/uncoated paper and tags, high gloss paper, economy synthetics	BTT300SWR
Premium wax/resin	110mm / 4.33 inch	300m	Coated/uncoated paper and tags, high gloss paper, synthetics	BTT300PWR
Standard resin	110mm / 4.33 inch	300m	Coated papers and tags, synthetics, textures	BTT300SR
Premium resin	110mm / 4.33 inch	300m	Economy and speciality synthetics	BTT300PR
Standard wax	60mm / 2.36 inch	300m	Coated/uncoated paper and tags, high gloss paper	BTT300SW60
Premium wax/resin	60mm / 2.36 inch	300m	Coated/uncoated paper and tags, high gloss paper, synthetics	BTT300PWR60
Standard resin	60mm / 2.36 inch	300m	Coated papers and tags, synthetics, textures	BTT300SR60

Thermal Transfer Labels	Size	Quantity	Colour	Item No
Continuous label roll (25mm core)	102mm x 48m	Continuous	White	BTTR102C
Die cut label roll (38mm core)	100mm x 150mm	400 labels	White	BTTR100DC
Die cut label roll (25mm core)	100mm x 50mm	800 labels	White	BTTR50DC
Die cut label roll (25mm core)	100mm x 40mm	1500 labels	White	BTTR40DC

With label design apps for desktop PC's and mobile devices, as well as SDK's to integrate the TD4T range into your own applications, you can choose the best option for your label printing needs.

Brother provides all the necessary tools required for software developers to integrate printing into their applications. Printer drivers are available for Windows OS, and Software Development Kits can be provided to support Windows Mobile*, Android and iOS operating systems.

Software Support Features



Crop Function

Built into the Windows driver, this function helps take away the inconvenience of using A4 sheets of labels in your standard printer. This clever feature automatically scans through the document and where a barcode is present it extracts shipping or product labels one at-a-time then prints as individual on the Brother label printer.

Printer Commands

With support for ZPL II emulation and a variety of additional printer command languages, developers can easily integrate printing into existing legacy systems (see specification tables for further details).

Mobile Deploy

Cloud-based app for mobile devices (iOS and Android™), which allows IT administrators to remotely update and configure multiple Brother mobile printers. Using Mobile Deploy, the administrator can easily upload new update packages to an online location, and then share the URLs with the users.

Software Development Kits (SDK's)

Brother can also supply a selection of free of charge Software Development Kits to give you an easy method of incorporating label printing directly from within your own software programs. Available from: www.brother.co.jp/eng/dev

Template Mode

Design the required document on your Windows PC, including logos and barcodes. Once transferred and stored in the printer's memory, the template can be recalled and any data replaced, before printing with just a few short commands.

Software

Model No	TD4420TN	TD4520TN	TD4650TNWB	TD4750TNWB
Bartender Ultra Lite Edition	✓	✓	✓	✓
Brother Printer Management Tool	✓	✓	✓	✓

For further details visit: <https://support.brother.com>

TD4T Range in detail



TD4420TN



TD4520TN



TD4650TNWB



TD4750TNWB

4 Inch

Printing

Print technology	Thermal Transfer/ Direct Thermal			
Print speed	152.4mm/sec	105mm/sec	203.2mm/sec	152.4mm/sec
Resolution	203dpi	300dpi	203dpi	300dpi
Max. print width	108mm	105.7mm	108mm	105.7mm
Min. print length	Peeler: 25.4mm, Cutter: 25.4mm Tear: 50mm			
Max. print length	25,400mm	11,430mm	25,400mm	11,430mm
Media sensor type	Gap (Transmissive)		Gap (Transmissive), Black Mark (Reflective)	
Media sensor location	Gap (Fixed), Reflective (Adjustable)			
Tear off release mode	Standard: Continuous, Tear off Optional: Peeler, Cutter			

Media

Media types	Continuous, Die-cut, Black mark, Fan-fold, Notch	Continuous, Die-cut, Black mark, Fan-fold, Notch, Punched hole media.
Media thickness	0.06 - 0.19 mm (0.002 inch to 0.007 inch)	
Media width	20 - 112mm (0.79 inch to 4.41 inch)	
Media length	5mm - Max. print length (0.20 inch to Max inch)	
Diameter (Max)	127mm (5 inch)	
Core Diameter (Max)	25.4mm & 38.1mm (1.0 inch & 1.5 inch)	
Types	Wax, Wax/Resin, Resin	
Wound type	Outside wound	
Ribbon width	40 - 110 mm (1.57 inch to 4.33 inch)	
Suggested paper core width	0.5 inch paper core: fixed width 110mm, width 2 notches in each side 1 inch paper core: fixed width 110mm with 2 notches in each side 1 inch paper core: paper core width is the same as ribbon width and use with ribbon spindles	
Inner paper core & ribbon length	0.5 inch paper core: Max. OD 40mm, 110m length 1 inch paper core: Max. OD 67mm, 300m length	

Connectivity

USB	USB version 2.0 (full speed)			
USB host capability	Yes	Yes	Yes	Yes
Serial	RS-232			
Wired LAN	Internal Ethernet, 10/100 Mbps			
USB host port	Yes	Yes	Yes	Yes
Bluetooth	No	No	Yes	Yes
Bluetooth profile	N/A		Bluetooth Ver.4.2 SPP (Bluetooth Classic)	
Wireless LAN	No	No	WiFi IEEE 802.11 a/b/g/n	
Wireless LAN security	N/A		Authentication method (encryption scheme) *Infrastructure mode Open system (None/WEP64/ WEP128) WPA/WPA2-PSK (TKIP+AES) EAP-FAST (TKIP/AES) PEAPv0 (TKIP/AES) EAP-TLS (TKIP/AES) EAP-TTLS (TKIP/AES)	
MFI support	No	No	No	No
AirPrint	No	No	No	No
Wired LAN	Yes	Yes	Yes	Yes



TD4420TN



TD4520TN



TD4650TNWB



TD4750TNWB

4 Inch

General

Control panel	1 button 1 LED with 3 colours	1 button 1 LED with 3 colours
LCD type	None	2.3" colour LCD

Power

Adapter	External Universal Switching Power Supply Input: AC 100-240V, 2.5A, 50-60Hz Output: DC24V, 2.5A, 60W	External Universal Switching Power Supply Input: AC 100-240V, 2.0A, 50-60Hz Output: DC24V, 3.75A, 90W
---------	--	---

Software

Operating system support	Windows 7/8/8.1/10. Windows Server 2008/2008R2/2012/2012R2/2016, 2019. OS X 10.10.x,10.11.x. macOS 10.12.x,10.13.x,10.14.x. Linux.	Windows 7/8.1/10. Windows Server 2012/2012R2/2016/2019. OS X 10.11.x. macOS 10.12.x, 10.13.x, 10.14.x, 10.15.x. Linux.
--------------------------	---	---

Supported printer commands	FBPL-EZD (EPL, ZPL, ZPL2, DPL) FBPL-EZS (EPL, ZPL, ZPL2, SBPL)
----------------------------	---

Barcode symbologies	<p>1D: Code128UCC, Code128 subsets A, B, C, EAN128, Interleaved 2 of 5, Interleaved 2 of 5 with check digit, Standard 2 of 5, Industrial 2 of 5, Code39, Code39 with check digit, Code93, EAN-13, EAN-8, UPC-A, UPC-E, EAN and UPC 2 (5) digits add-on, Codabar, Postnet, MSI, MSI with check digit, PLESSEY, China post, ITF14, EAN14, Code11, TELEPEN, TELEPEN number, PLANET, Code49, Deutsche Post Identcode, Deutsche Post Leitcode, LOGMARS</p> <p>2D: CODABLOCK F mode, RSS Barcode (GS1 DataBar), GS1 DataMatrix, Maxicode, AZTEC, PDF417, QR Code, Micro PDF417, TLC39</p>
---------------------	---

Internal fonts	8 alpha-numeric bitmap fonts Monotype Image® true type font engine with one CG Triumvirate Bold Condensed scalable font
----------------	--

Memory

RAM	64MB	128MB
Flash	128MB	128MB

Environmental

Operating temperature	Operate: 5°C to 40°C
Operating humidity	25 - 85% (without condensation)
Storage temperature	-40°C to 60°C
Storage humidity	10 - 90% (without condensation)

Weights & Dimensions

Dimensions (mm)	204(w) x 280(d) x 164(h)	219(w) x 284(d) x 191(h)
Weights	2.5kg	3kg

Included Items

Supplied in box	AC adapter & cord, USB cable, documentation. 1" ribbon paper core. 30m standard wax starter ribbon	AC adapter & cord, USB cable, documentation. 1" ribbon paper core. 30m standard wax starter ribbon
-----------------	--	--

* Font licensee permissions are required.

brother

at your side

Contact:

brother.co.nz

Brother International (NZ) Ltd.

27 Matarawa Place, Tauriko

Tauranga 3171

Tel: 07 543 5600

SOL-005-V1-0420